











Caribbean Platinum

Specifications

	230 CP3	250 CP3	250 CP3 (400 HP)
Length (LOA)	24'6"	25'4"	25'4"
Horsepower	300 HP	300 HP	400 HP
Fuel Tank	54 gal	54 gal	77 gal
Persons Capacity	13	15	13
Maximum Persons Weight	1,815 lbs	2,075 lbs	1,765 lbs
Maximum Persons, Motor & Gear Weight	2,625 lbs	2,750 lbs	2,790 lbs
Boat Weight	3,719 lbs	4,319 lbs	4,426 lbs

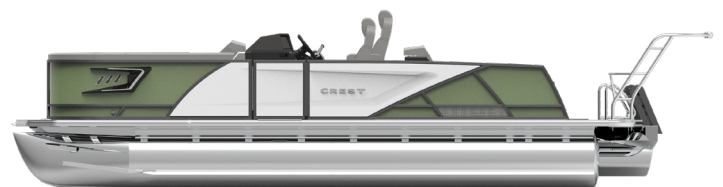
For a full list of specifications, visit crestpontoonboats.com. Not all color combinations may be available. Colors shown are for representative purposes only. See your Crest dealer for details.

EXTERIOR FENCE COLORS

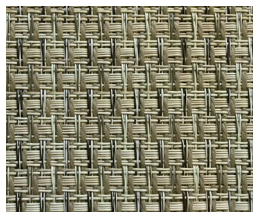
	Black Metallic		Steel Gray Metallic
	White Metallic		Navy Metallic
	Cabernet Metallic		Sage Green Metallic
	Caribou Metallic		Steel Blue Metallic

COLOR PLACEMENT

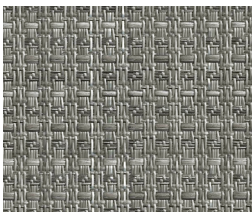
Shown: Sage Green with White Fiberglass Panels



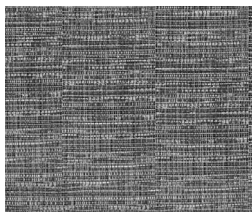
Flooring Options



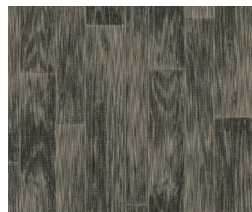
SeaGrass
Tan Blended Tweed



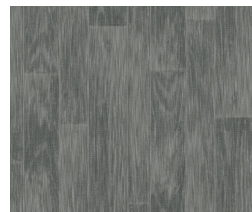
SeaGrass
Gray Blended Tweed



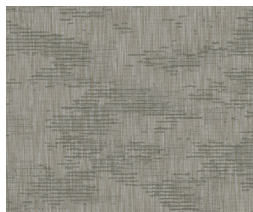
SeaGrass
Fusion Gray
Blended Tweed



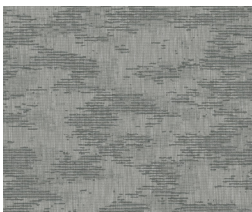
SeaGrass
Tan Woven Lakeport
Blended Tweed



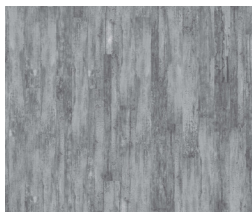
SeaGrass
Gray Woven Lakeport
Blended Tweed



SeaGrass Premium
Tan Blended Tweed



SeaGrass Premium
Gray Blended Tweed



Poly Vinyl
Rustic Weathered Gray

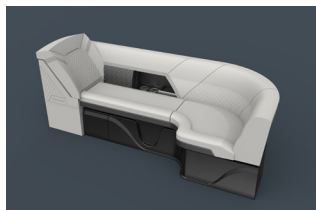


Poly Vinyl
Cabin Life

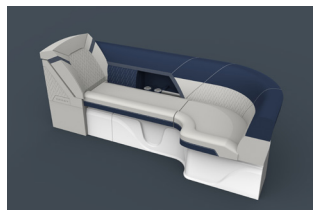
Upholstery Options



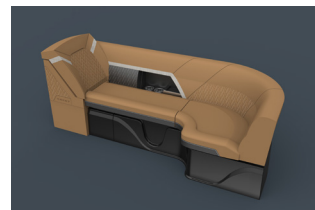
Tan



Gray



Navy Cool Touch



Beach

Floor Plan Options



SLC | Portside Captain's Chair
230 | 23' 250 | 25'



SLS | Swing Back Mini L
230 | 23' 250 | 25'



SLRC | Rear Chaise
230 | 23' 250 | 25'

